

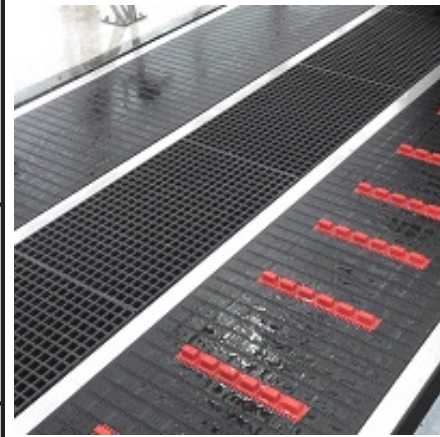
Electric Control Kit for Dual Belt Conveyor Washes

Part Number: E-SE-C1029-B-A

Description: Electric Control Kit for Dual Belt Conveyor Washes

Site Map: Home

Price: \$3,215.00



Detailed Description

Electric Control Kit for facilities using the Tommy Transporter Dual Belt Conveyor.

Specifications

Kit includes:

- 10x Banner SMB30SC Mounting Bracket Assemblies (CCS-52521)
- 5x Banner QS30EX Emitter Assembly (CCS-71964)
- 5x Banner QS30RRX Receiver Assembly (CCS-71965)
- 1x Turck PNP Proximity Sensor (CCS-T4647600)
- 1x VPS Sensor Bracket (P-INS-277)
- 2x Start / Stop / Pause Station (E-SE-C2058-A)
- Includes Required Fittings